

the human condition

LABOR WORK ACTION

(2017)

Claudia-Renée Gonzalez

Text excerpts from Hannah Arendt's *The Human Condition* (1958)

the human condition - LABOR WORK ACTION

Claudia-Renée Gonzalez (2017)

Duration: 4'58"

For five voices with amplification

Soprano

Alto 1

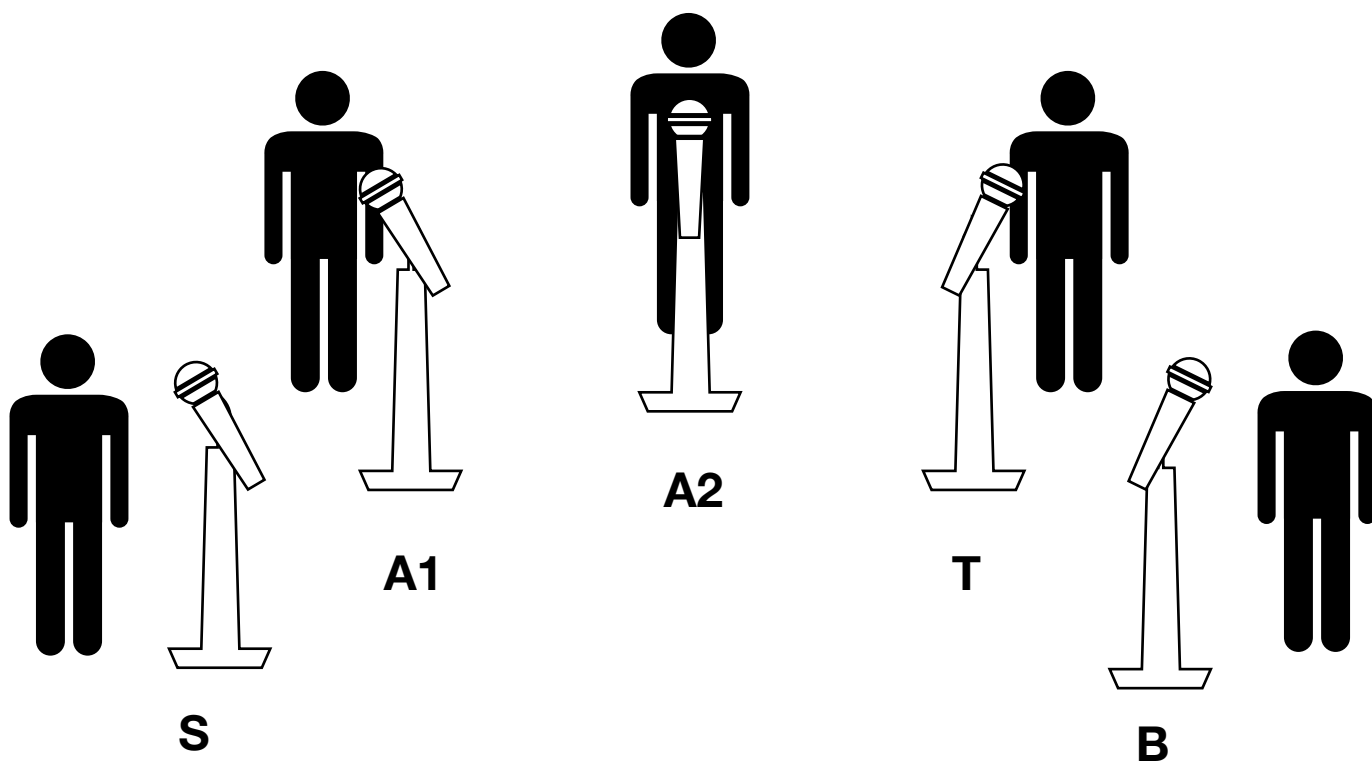
Alto 2

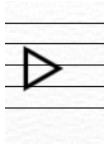
Tenor

Bass

***The human condition - LABOR WORK ACTION* is a musical expression of the text written by Hannah Arendt concerning the benefit of living an active lifestyle, or “vita activa”, in contrast to a contemplative lifestyle. The text of this piece is derived from her book “The Human Condition” (1958).**

setup

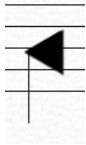




Exhale (notated as a whole note)



Exhale with attack (notated as a half note)



Inhale (notated as a quarter note)



Inhale with attack (notated as a quarter note)

Sp: The human condition
of labor is life

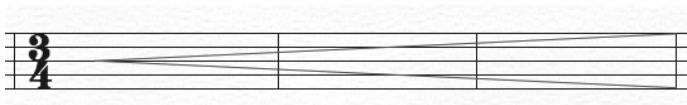
Speak the text in the allotted number of beats (as directed with x noteheads)



Glissando pitch down in allotted number of beats



Produce a "tss" sound (notated as an eighth note)



Exhale with crescendo (glottal stop)

+ With mouth closed

o With mouth open

the human condition

LABOR WORK ACTION

Claudia-Renée Gonzalez

♩ = 90

Musical score for Soprano, Alto 1, Alto 2, Tenor, and Bass, measures 1-4. The score is in 4/4 time. The Soprano part begins with a *p* dynamic. The Alto 1 part has dynamics of *p* and *mf*. The Alto 2 part has dynamics of *p* and *mf*. The Tenor part has a dynamic of *mf*. The Bass part is silent.

Musical score for Soprano, Alto 1, Alto 2, Tenor, and Bass, measures 5-8. The score is in 4/4 time. The Soprano part begins with a *pp* dynamic and includes the lyrics "Sp: The human condition of labor is life". The Alto 1 part has dynamics of *pp* and *mf*. The Alto 2 part has dynamics of *pp* and *mf*. The Tenor part has a dynamic of *pp* and includes the lyrics "Sp: The human condition of labor is life". The Bass part is silent.

the human condition

Piu mosso

9 *mp* *ppp*

S *mp* *ppp*
Sp: The human condition of labor is life Ooh

A 1 *mp* *mp*
Sp: The human condition of labor is life

A 2 *mp* *mf*
Sp: The human condition of labor is life Ahh.

T *mp* *mf*
Sp: The human condition of labor is life

B *mf*
Oh Oh Oh Oh Oh Oh

14 *f* *mf*

S *f* *mf*
Ooh

A 1 *f* *mf*

A 2 *Ahh!*

T *f* *mf*

B *f* *mf*
Oh Oh Oh Oh

18

Soprano (S): *f* *>*

Alto 1 (A1): *f* *>*, *mf*

Alto 2 (A2): *f* *>*, *Ahh.*, *Ahh!*

Tenor (T): *f* *>*, *Ooh*

Bass (B): *f* *>*, *Oh*, *Oh*, *Oh*, *Oh*, *Oh*, *Oh*

22

Soprano (S): *f* *>*, *Ooh*

Alto 1 (A1): *f* *>*

Alto 2 (A2): *f* *>*

Tenor (T): *f* *>*, *Ooh*

Bass (B): *f* *>*, *Oh*, *Oh*, *Ooh*

25

S

A1

A2

T

B

30

S

A1

A2

T

B

Ooh

Ahh

Ahh

Ohh

Ahh

Ah

Ah

Ah

37

S
A1
A2
T
B

f *mf* *f* *mf* *f* *f* *f*

Ooh _____ Aah _____
Aah _____
Aah _____
Aah _____
Ahh _____

44

♩ = 90

S
A1
A2
T
B

sfz *sfz* *f*

Ahh _____
Ahh _____
Ah ah ah ah ah ah ah ah ah ah ah ah ah ah ah ah ah ah ah

52

S *sfz* *f*
Ohh — Ah ah ah ah ah ah ah ah ah ah ah ah ah ah ah ah ah

A1 *sfz* *sfz* *f*
Ahh — Ohh — Ah ah ah ah ah ah ah ah ah ah ah ah ah

A2 *sfz* *sfz* *f*
Ahh — Ohh — Ah ah ah ah ah ah ah

T *sfz* *sfz* *f*
Ahh — Ohh — Ah ah ah ah ah ah ah ah ah ah

B
ah ah ah ah ah ah ah ah ah ah ah ah ah ah ah ah ah

60 *mf* *f*

S ah ah ah ah ah ah ah ah ah ah ah ah ah ah ah ah ah Sp: With the term vita activa, I propose three fundamental aspects of human life.

A1 *mf*
Ooh — Ooh — Ooh

A2 *mf*
Ooh Ooh Ooh

T *mf*
Ooh Ooh Ooh

B *mf*
Ohh — Ohh — Ah ah ah ah ah ah ah ah ah ah ah ah ah ah ah ah ah



68 *mf* *sfz* *f*

S *mf* *sfz* *f*
 Ooh Ooh Ooh Aah Sp: Work provides an artificial world of things.

A 1 *sfz*
 Ooh Ooh Ooh Aah Ooh

A 2 *sfz* *f*
 Ooh Sp: Work corresponds to the unnaturalness of human existence. Ooh

T *sfz* *mf*
 Ooh Ooh Ooh Aah Ooh

B *sfz* *mf*
 Ooh Ooh ooh ooh ooh ooh ooh ooh ooh Aah Oh oh oh oh oh

74 *f* *mp*

S *f* *mp*
The human condition of work is worldiness. Ah ah ah ah ah ah ah ah ah

A 1 *f*
 Ooh Ooh Aah Aah Aah Aah Ohh Ohh

A 2 *f*
 Ooh Ooh Aah Aah Aah Aah Ohh Ohh

T *f*
 Ooh Ooh Aah Aah Aah Aah Ohh Ohh

B *f*
 oh oh oh oh oh oh oh oh oh oh Aah Aah Aah Aah Ohh Ohh

82

S ah ah ah ah ah ah ah ah ah ah ah ah ah ah ah ah ah

A1 *p* Aah Aah

A2 *p* Aah Aah

T *mp* Aah ah ah ah ah ah ah ah ah ah ah

B *p* Aah Ohh

90 *rit.* ♩ = 90

S ah ah ah ah ah ah ah ah ah ah ah ah *f* Vi - ta

A1 *mp* Ah ah ah ah ah ah ah ah ah ah ah ah *mf* Aah Aah Ah Aah

A2 *mf* Aah Aah Aah

T *mf* Aah Aah Aah Aah

B *f* Ooh *mf* Ah ah ah ah ah ah ah ah ah Aah

98

S Ac - ti - va

A1 *mf* *sfz* *mf*
Aah Aah Ah Aah Ah Aah

A2 *mf* *sfz* *mf*
Aah Aah Aah Aah Aah Ahh Aah

T *mf* *sfz* *mf*
Aah Aah Aah Aah Aah Aah Aah

B *mf* *sfz* *mf*
Ah ah ah ah ah ah ah Aah Aah Aah

105

S *f* *mf*
Ooh

A1 *mf*
Aah Ooh

A2 *mf*
Aah Ooh

T *mf*
Aah Ah ah ah ah ah ah ah ah ah ooh ooh ooh

B *mf*
Aah Ah ah ah ah ah ah ah ah Ooh

111 *f*

S Ac-tion-cor-re-ponds to the hu-man con-dition of plur-al-i-ty - - - *mf* Ohh - - -

A1 Ac-tion cor-res-ponds to the hu-man con-di-tion of plu-ral-i-ty. - - -

A2 Ac-tion cor-res-ponds to the hu-man con-di-tion of plu-ral-i-ty. - - -

T Ac-tion cor-res-ponds to the hu-man con-di-tion of plu-ral-i-ty. - - -

B *f* Ooh - - -

114 *f*

S To the fact than man not men, live on the earth and in-ha-bit the wo - rld.

A1 To the fact that man not men, live on the earth and in-ha-bit the wo - rld.

A2 To the fact than man not men, live on the earth and in-ha-bit the wo - rld.

T To the fact than man not men, live on the earth and in-ha-bit the wo - rld.

B Ooh Ooh Ooh

118 *mf* *mp*

S Ooh Ahh Ahh

A1 *mf* *f*
Ooh Aah Sp: Whatever enters the human world on its own accord becomes part of the human existence.

A2 *mf* *mp*
Aah

T *mf* *mp*
Ooh Ahh

B *mf* *mp*
Ooh Ahh Ahh

124

S Ahh

A1 *mp*

A2 Aah

T Ahh

B Ahh

12

130

rit.

the human condition

S

Musical staff for Soprano (S) in treble clef. It begins with a half note on G4, followed by a whole rest. The second measure contains a half note on G4 with a plus sign above it. The staff ends with a double bar line.

Ohh

Ooh

A 1

Musical staff for Alto 1 (A 1) in treble clef. It contains a whole rest in the first measure and a long, tapering line in the second measure, indicating a sustained or fading sound.

A 2

Musical staff for Alto 2 (A 2) in treble clef. It begins with a half note on G4, followed by a whole rest. The second measure contains a half note on G4 with a plus sign above it. The staff ends with a double bar line.

Ohh

Ooh

T

Musical staff for Tenor (T) in treble clef. It begins with a half note on G4, followed by a whole rest. The second measure contains a half note on G4 with a plus sign above it. The staff ends with a double bar line.

Ohh

Ooh

B

Musical staff for Bass (B) in bass clef. It begins with a half note on G3, followed by a whole rest. The second measure contains a half note on G3 with a plus sign above it. The staff ends with a double bar line.

Ohh

Ooh